



Contact
P: (345)946-7780
E: nra@nra.ky

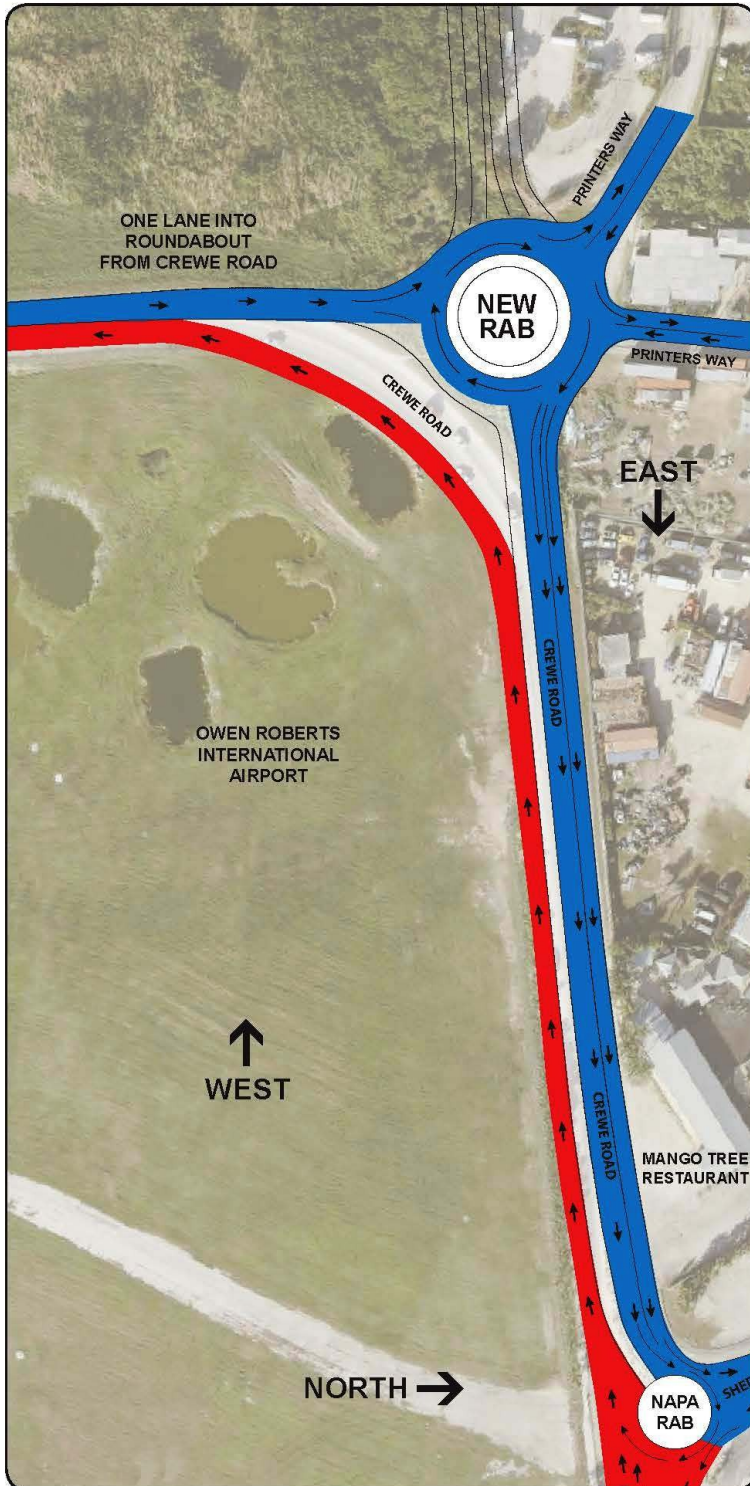
NEW TEMPORARY ROAD LAYOUT STARTS - ELGIN AVENUE TO CREWE ROAD CONNECTOR

[CLICK HERE](#)- New Temporary Road Layout starts - Elgin Avenue to Crewe Road Connector

NEWS DESCRIPTION

TEMPORARY ROAD LAYOUT

Elgin Avenue to Crewe Road Connector



New Temporary Road Layout Starts Monday, 18th March 2019

The NRA look forward to this phase of the Elgin Avenue to Crewe Road Connector widening project being completed and thank you for your patience.

We apologize for any inconvenience caused by these works.

North bound traffic on Crewe road will use the temporary slip lane to enter the new roundabout.

Traffic from Printers Way **MUST** use the new roundabout.

Traffic exiting Dorcy Dr. heading to Crewe Road will use one lane on temporary surface.

To ensure your safety, please follow all relevant signs and road markings

-  www.caymanroads.com
-  nra@nra.ky
-  345.946.7780
-  www.facebook.com/nraroads/

The National Roads Authority aims to improve lives by improving transportation.

